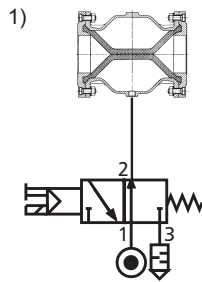
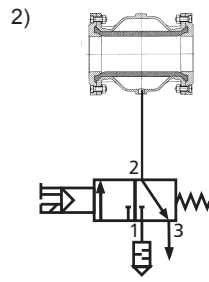


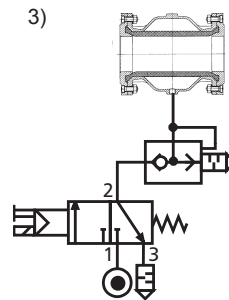
# Styringer / Controls



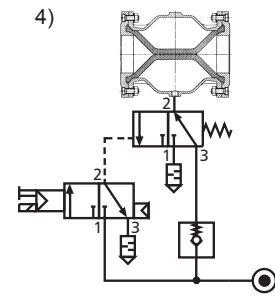
3/2 vejs magnetventil  
strømløs åben (NO)  
3/2-way solenoid valve  
currentless open (NO)



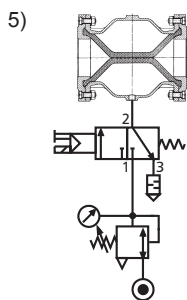
Ved sugefødning:  
Vakuumpumpe på tilslutning 3  
Conveying by suction:  
vacuum-pump at connection 3



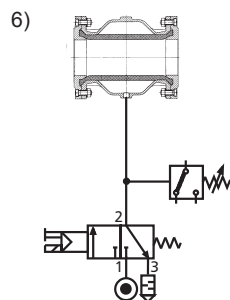
3/2 vejs magnetventil (NC)  
med hurtigudluftningsventil  
3/2-way solenoid valve (NC)  
with quick exhaust valve



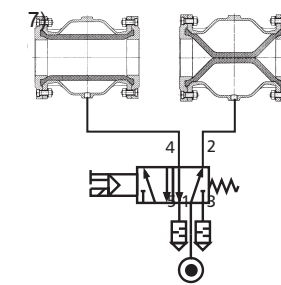
Ved trykluft-/strømsvigt:  
Klemmeventil forbliver lukket  
For pressure power shut down:  
Pinch valve remains in closed position.



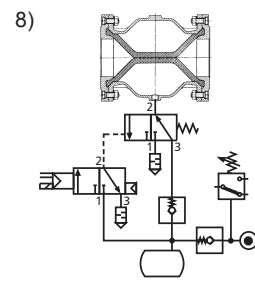
3/2 vejs magnetventil (NC)  
strømløs lukket med trykreducing  
3/2-way solenoid valve (NC)  
normally closed with pressure regulator



3/2 vejs magnetventil strømløs  
lukket (NC) med trykregulator  
3/2-way solenoid valve normally  
closed (NC) with pressure switch



5/2 vejs magnetventil  
for vekselstyring  
5/2-way solenoid valve  
for various regulation



Ved trykluft-/strømsvigt: Klemmeventil  
lukker også i åben tilstand (Luftbuffer).  
For pressure power shut down: Pinch valve  
can close in open position (air tank).

## Åbnings- og lukningstider for slangeventiler Opening and closing times of the Pinch Valve

Nominal bredde (mm) Diameter (mm)	Åbningstid (sek.) Opening time (sec.)	Lukketid (sek.) Closing time (sec.)
10	<1,0	<1,0
15	<1,0	<1,0
20	<1,0	<1,0
25	<1,0	<1,0
32	<1,0	<1,0
40	<1,0	<1,0
50	<1,0	<1,0
65	1,0	<1,0
80	1,7	1,0
100	2,2	1,8
125	4,0	2,5
150	7,0	4,0
200	13,0	9,0
250	25,0	16,0

Angivelserne er baseret på følgende forudsætninger:

- Membran: Naturgummi (Type: 03X)
- Styretryk: 2,5bar / Driftstryk: 0bar (Atmosfære)
- Pilotventil: NW 9mm / G1/4" (direkte monteret)

The details are based on the following:

- Sleeve: Natural rubber (type: 03X)
- Control pressure: 2,5bar / Operation pressure: 0bar (Atm.)
- Solenoid Valve: DN 9mm / G1/4" (directly mounted)

Åbnings- og lukningstider kan svinge og er afhængige af

- Driftstryk i membran
- Lufflow på styringsenheder
- Taktfrekvens (lukning/åbning)
- Gummikvalitet på membran
- Temperatur
- Længde på styrekabel

The opening and closing times may vary. These times depend on:

- Operation pressure inside the sleeve
- Airflow capacity of control device
- Number of cycles (open/close)
- Material of the sleeve
- Temperature
- Length of control line

Tekniske ændringer forbeholdes.

Technical details subject to change without notice.

**AKO Armaturen & Separations GmbH**

D-65468 Trebur-Astheim • Adam-Opel-Str. 5 • Telefon: +49 (0) 61 47-9159-0 • Fax: +49 (0) 61 47-9159-59

E-mail: ako@ako-armaturen.de • Internet: www.slangeventiler.dk