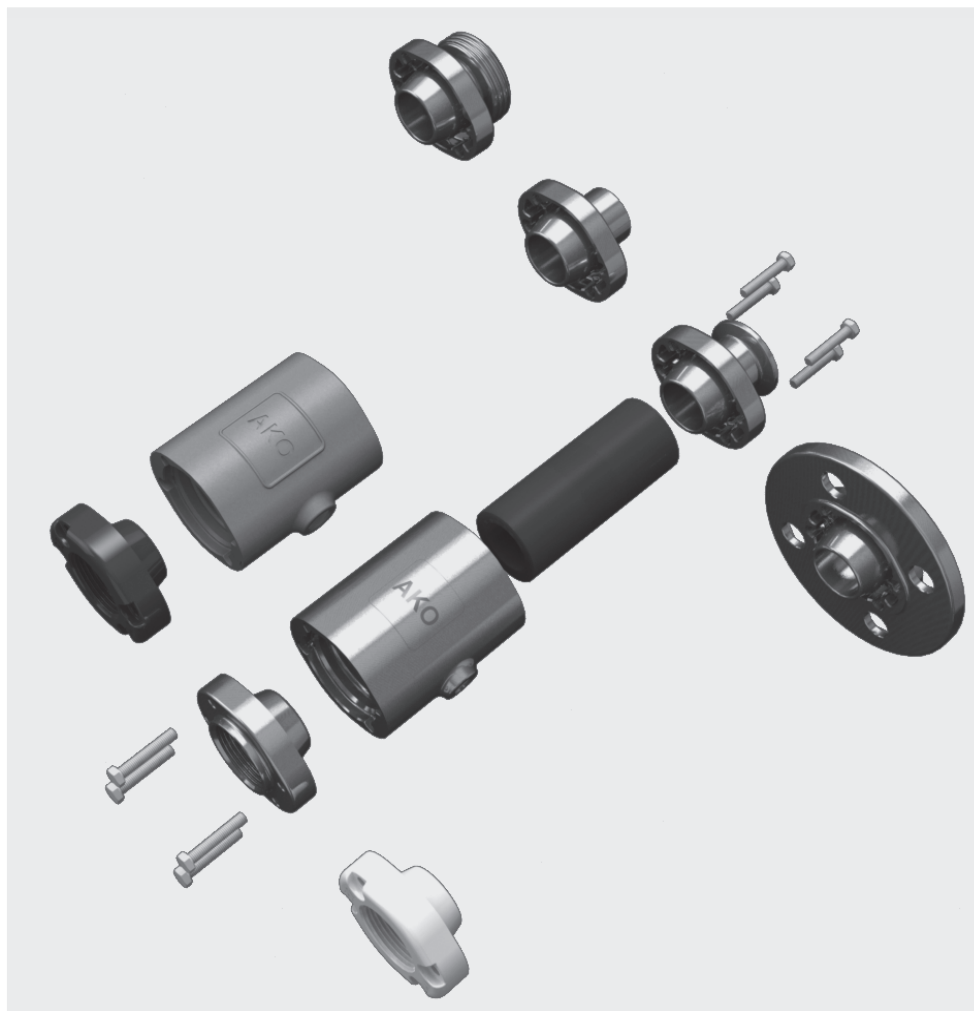


New!

Pneumatisk slangeventil type VMC Air operated Pinch Valve type VMC



Flange / Flange



Indvendig gevind / Internal Thread



Tri-clamp



Tilsvajnsender / Weld-on ends




Geving studs / Threaded spigot

 **Det fleksible modulsystem for opløselige og aseptiske rørledningsforbindelser!**

Den ideelle løsning for lukning og styring af faste stoffer af alle slags, opløsninger, pastaer, gasformede, fiberholdige og trægt flydende medier.

Fordele:

- Flexibelt modulsystem
- Diverse tilslutningsmuligheder
- Ekstrem kompakt
- Lav vægt
- 100% fri produktgennemløb
- Dødrumsfri
- Enkel udskiftning af manchetten
- Optimal tætning
- Økonomisk

 **The flexible modular system for solvable and aseptic piping connections!**

The ideal solution for isolation and regulation of solids of all kinds, suspensions, pastes, gaseous, fibrous and viscous media.

Advantages:

- Flexible modular system
- Various connection options
- Extremely compact
- Light weight
- Complete free passage
- No dead spots
- Easy maintenance and re-sleeving
- 100% tight shut off
- Competitive

Pneumatisk slangeventil type VMC

Air operated Pinch Valve type VMC

Industrielle områder:

- fødevare-/ farmaindustrien
- kemisk industri
- pneumatiske transportsystemer
- pigment-/ granulatbehandling
- keramik-/ glas-/ plastindustri
- udsugningsanlæg
- doseringsanlæg
- påfyldnings- og vejelanlæg
- be- og afluftningssystemer

Tilslutninger med forskellige aseptiske-tilslutninger mulig!

Tilslutningsmuligheder:

Flangetilslutning
 Indvendig gevindtilslutning G / NPT
 Tri-clamp tilslutning
 Tilsvejsningsender
 Geving studs (Mælkerørgevind)

Specielle ledende udførelser med speciel jordforbindelse for anvendelse i EX områder i zone 1, 2, 21 og 22 er også tilgængelige.

De pneumatiske slangeventiler i VMC serien opfylder kravene i direktiv for apparater under tryk 97/23/EF.

Råmaterialer / materialer:

Hus: Rustfri stål 1.4408
 Aluminium AlSi10Mg
 Plastic POM

Tilslutningsdæksel: Rustfri stål 1.4404
 Plastic POM

Manchetter:

Naturgummi slidstærkt, Naturgummi levnedsmiddel, EPDM, EPDM levnedsmiddel, Nitril, Nitril levnedsmiddel, Hypalon, Butyl, Neopren, Silikone, Viton, andre på forespørgsel.

Maksimal driftstryk (medietryk): ~ 6 bar
Maksimal styretryk (lukketryk): 8 bar
Differenstryk: 2-3,5 bar
 Varierer efter nominel bredde/elastomer

Industrial areas:

- Food/ pharmaceutical/ beverage industry
- Chemical industry
- Pneumatic conveying systems
- Pigments and granules
- Ceramics/ glass/ plastic industry
- Extraction systems
- Dosing systems
- Filling and weighing systems
- Air venting systems

Connections with various aseptic connections available!

Connection options:

Flange Connection
 Internal Thread Connection G / NPT
 Tri-Clamp
 Weld-on ends
 Threaded spigot (RJT Connection)

Special, conductive models with a separate earthing system, which are suitable for use in areas at risk of explosions (EX) in zones 1, 2, 21 and 22 are also available.

The air operated Pinch Valves of VMC series fulfill all requirements of the Pressure Equipment Directive 97/23/EC.

Materials:

Body: Stainless steel 1.4408
 Aluminium AlSi10Mg
 Plastic POM

Socket Connection: Stainless steel 1.4404
 Plastic POM

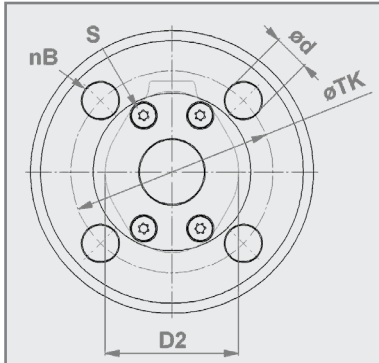
Sleeves:

Natural rubber antiabrasive, Natural rubber food quality, EPDM, EPDM food quality, Nitrile, Nitrile food quality, Hypalon, Neoprene, Silicone, Viton, other materials on request.

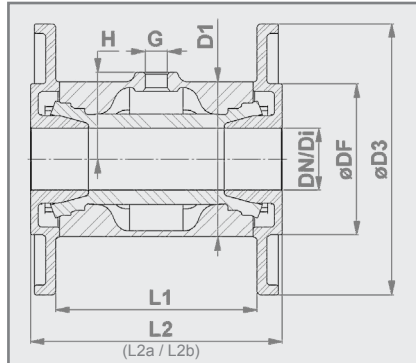
Operating / medium pressure max.: ~ 6 bar
Control / closing pressure max.: 8 bar
Differential pressure: 2-3.5 bar
 varies depending on diameter / sleeve

Pneumatisk slangeventil- Flangetilslutning

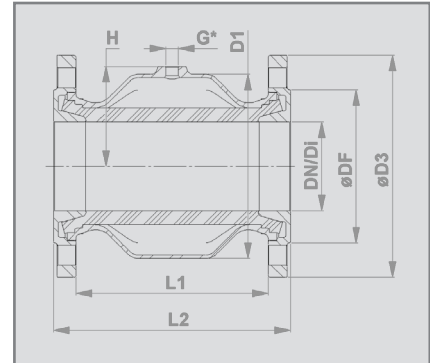
Air operated Pinch Valve - Flange connection



DN25 - DN80



DN25 - DN50 * DIN EN ISO 228 "G"



DN65 - DN80 * DIN EN ISO 228 "G"

Tilslutningstype:

Flangetilslutning i henhold til
DIN EN 1092-1 PN 10/16

DIN 11853-2 (L2a) / 11864-2 form A (L2b) på forespørgsel

Hus:

- Rustfri stål 1.4408 (E)
- Aluminium AISi10Mg (A)

Flange:

- Rustfri stål 1.4404 (E)

Ventiloverflade:

Rustfri stål: Elektropoleret mat

Medieberørte dele = Ra 0,5

På bestilling mekanisk poleret Ra 0,3

Aluminium: Pulverlakeret 60-80µm RAL 9006

Connection type:

Flange connection according to
DIN EN 1092-1 PN 10/16

DIN 11853-2 (L2a) / 11864-2 form A (L2b) on request

Body:

- Stainless steel 1.4408 (E)
- Aluminium AISi10Mg (A)

Flange:

- Stainless steel 1.4404 (E)

Valve finish:

Stainless steel: Electropolished matt

Wetted parts = Ra 0.5

Satin polished (brushed) Ra 0.3 on request.

Aluminium: Powder coated 60-80µm RAL 9006

| DN / DI (mm) | D1 (mm) | D2 (mm) | ø D3 (mm) | ø DF (mm) | nB | ø d (mm) | ø TK (mm) | L1 (mm) | L2 (mm) | L2a (mm) | L2b (mm) | G (inch) | H (mm) | ¹ S | ² Vol. (l) (ca./approx.) | Vægt weight (kg) (EE) | Vægt weight (kg) (AE) |
|-----------------|------------|------------|--------------|--------------|----|-------------|--------------|------------|------------|-------------|-------------|-------------|-----------|----------------|--|-----------------------------|-----------------------------|
| 25 | 72 | 57 | 115 | 68 | 4 | 14 | 85 | 96 | 125 | 213 | 218 | 1/8" | 36,5 | 4x(M6x35) | 0,09 | 2,4 | 1,9 |
| 32 | 80 | 66 | 140 | 78 | 4 | 18 | 100 | 104 | 130 | 226 | 241 | 1/4" | 45 | 8x(M6x35) | 0,13 | 2,9 | 2,3 |
| 40 | 90 | 77 | 150 | 88 | 4 | 18 | 110 | 119 | 155 | 238 | 253 | 1/4" | 50 | 8x(M6x35) | 0,22 | 4,0 | 3,1 |
| 50 | 110 | 88 | 165 | 106 | 4 | 18 | 125 | 149 | 185 | 264 | 279 | 1/4" | 60 | 8x(M6x35) | 0,36 | 5,8 | 4,4 |
| 65 | 139 | 102 | 185 | 122 | 4 | 18 | 145 | 133 | 170 | 267 | 327 | 1/4" | 73,5 | 8x(M10x20) | 0,44 | 5,5 | 4,5 |
| 80 | 172 | 126 | 200 | 138 | 4 | 18 | 160 | 173 | 213 | 309 | 373 | 1/4" | 90 | 8x(M10x20) | 0,88 | 7,5 | 5,3 |

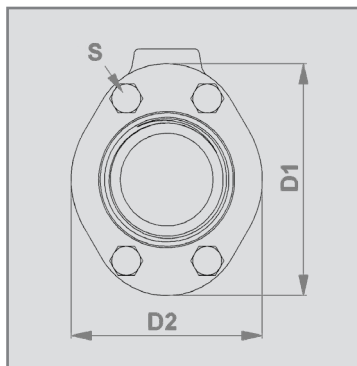
¹ Antal borer / Number of holes

¹ Monteringskruer (rustfri stål 1.4401 / AISI 316) i henhold til DIN 7985 / mounting screws (stainless steel 1.4401 / AISI 316) according to DIN 7985933 (EN24107)

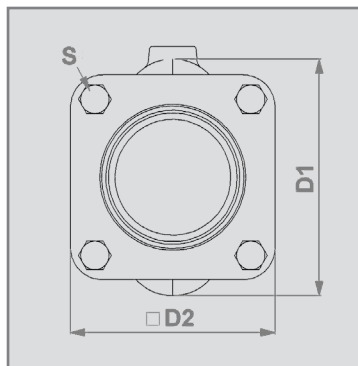
² Volumen = styremediets volumen ved lukket manchert / Volume = Control volume with closed sleeve

Pneumatisk slangeventil- Indvendig gevindtilslutning

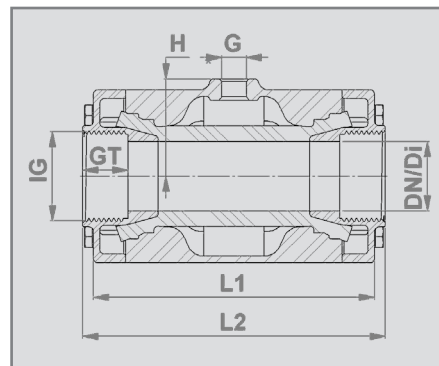
Air operated Pinch Valve - Internal Thread connection



DN10 - DN50



DN65 - DN80



* DIN EN ISO 228 "G"


Tilslutningstype:

Indvendig gevindtilslutning i henhold til DIN EN ISO 228 "G" eller ANSI/ASME B1.20.1 "NPT"


Connection type:

Internal Thread Connection according to DIN EN ISO 228 "G" or ANSI/ASME B1.20.1 "NPT"

Hus:

- DN 10-80: Rustfri stål 1.4408 (E)
- DN 20-80: Aluminium AISi10Mg (A)
- DN 10-15: Plastic POM (P) naturfarvet
- DN 10-15: Plastic POM (P) ledende 


Body:

- DN 10-80: Stainless steel 1.4408 (E)
- DN 20-80: Aluminium AISi10Mg (A)
- DN 10-15: Plastic POM (P) natural white
- DN 10-15: Plastic POM (P) conductive 

Gevinddæksel:

- DN 10-80: Rustfri stål 1.4404 (E)
- DN 20-50: Plastic POM (P) naturfarvet, fødevarebestandig
- DN 20-50: Plastic POM (P) ledende  for eksplosionstruede områder

(Internal Thread) Socket ends:

- DN 10-80: Stainless steel 1.4404 (E)
- DN 20-50: Plastic POM (P) natural white, FDA approved
- DN 20-50: Plastic POM (P) conductive  for hazardous areas

Ventiloverflade:

Rustfri stål: Elektropoleret mat

Valve finish:

Stainless steel: Electropolished matt

Aluminium: Pulverlakeret 60-80µm RAL 9006

Aluminium: Powder coated 60-80µm RAL 9006

| DN / Di (mm) | D1 (mm) | D2 (mm) | IG (inch) | GT (mm) | L1 (mm) | L2 (mm) | G (inch) | H (mm) | ¹ S | ² Vol. (l) (ca./approx) | Vægt weight (kg) (EE) | Vægt weight (kg) (AE) | Vægt weight (kg) (AP) | Vægt weight (kg) (PE) |
|--------------|---------|---------|--------------------|---------|---------|---------|----------|--------|----------------|------------------------------------|-----------------------|-----------------------|-----------------------|-----------------------|
| 10 | 46 | 35 | G $\frac{3}{8}$ " | 12 | 68 | 80 | 1/8" | 23 | 4x(M6x16) | 0,03 | 0,5 | - | - | 0,3 |
| 15 | 56 | 47 | G $\frac{1}{2}$ " | 15 | 85 | 95 | 1/8" | 28 | 4x(M6x20) | 0,05 | 0,8 | - | - | 0,4 |
| 20 | 62 | 49 | G $\frac{3}{4}$ " | 17 | 93 | 103 | 1/8" | 31,5 | 4x(M6x25) | 0,07 | 0,9 | 0,6 | 0,4 | - |
| 25 | 72 | 57 | G1" | 20 | 110 | 120 | 1/8" | 36,5 | 4x(M6x30) | 0,09 | 1,4 | 0,8 | 0,5 | - |
| 32 | 80 | 66 | G1 $\frac{1}{4}$ " | 21 | 130 | 140 | 1/4" | 45 | 8x(M6x35) | 0,13 | 1,8 | 1,2 | 0,9 | - |
| 40 | 90 | 77 | G1 $\frac{1}{2}$ " | 21 | 150 | 160 | 1/4" | 50 | 8x(M6x35) | 0,22 | 2,4 | 1,5 | 1,1 | - |
| 50 | 110 | 88 | G2" | 25 | 175 | 185 | 1/4" | 60 | 8x(M6x35) | 0,36 | 3,6 | 2,2 | 1,6 | - |
| 65 | 139 | 115 | G2 $\frac{1}{2}$ " | 30 | 173 | 200 | 1/4" | 73,5 | 8x(M10x35) | 0,44 | 3,7 | 3,0 | - | - |
| 80 | 172 | 133 | G3" | 33 | 213 | 230 | 1/4" | 90 | 8x(M10x35) | 0,88 | 5,5 | 4,4 | - | - |

¹ Monteringsskrue (rustfri stål 1.4401 / AISI 316) i henhold til DIN 933 (EN24107) / mounting screws (stainless steel 1.4401 / AISI 316) according to DIN 933 (EN24107)

² Volumen = styremediets volumen ved lukket manchet / Volume = Control volume with closed sleeve

* Alternativt anbefales vores K-variant → monteringslængde = 150 mm / Alternatively available is our K-variant → length = 150mm

Ret til tekniske ændringer forbeholdes.

Technical details subject to change without notice.

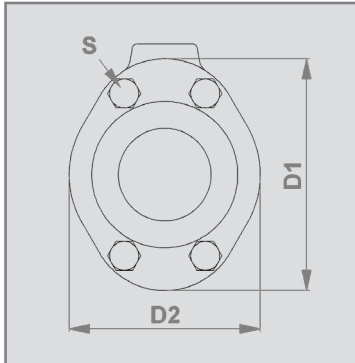
AKO Armaturen & Separations GmbH

D-65468 Trebur-Astheim • Adam-Opel-Str. 5 • Telefon: +49 (0) 61 47-9159-0 • Fax: +49 (0) 61 47-9159-59

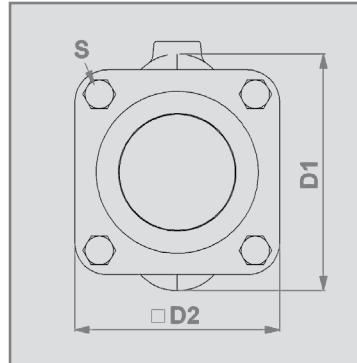
E-Mail: ako@ako-armaturen.de • Internet: www.slangeventiler.dk

Pneumatisk slangeventil- Tri-clamp tilslutning

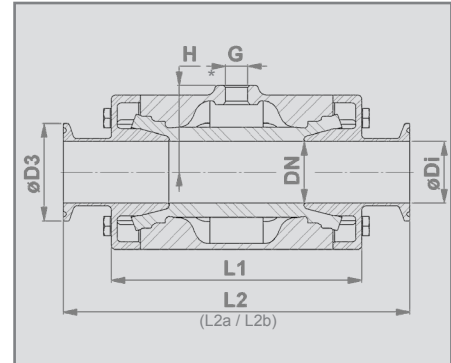
Air operated Pinch Valve - Tri-Clamp connection



DN10 - DN50



DN65 - DN80



* DIN EN ISO 228 "G"

Tilslutningstype:

Tri-clamp i henhold til DIN 32676


DIN 11853-3 (L2a) / 11864-3 form A (L2b) på forespørgsel

Connection type:


Tri-Clamp according to DIN 32676

DIN 11853-3 (L2a) / 11864-3 form A (L2b) on request

Hus:

- DN 10-80: Rustfri stål 1.4408 (E)
- DN 20-80: Aluminium AISi10Mg (A)
- DN 10-15: Plastic POM (P) naturfarvet
- DN 10-15: Plastic POM (P) ledende 

Body:

- DN 10-80: Stainless steel 1.4408 (E)
- DN 20-80: Aluminium AISi10Mg (A)
- DN 10-15: Plastic POM (P) natural white
- DN 10-15: Plastic POM (P) conductive 

Tri-clamp :

- DN 10-80: Rustfri stål 1.4404 (E)

Tri-Clamp Connection:

- DN 10-80: Stainless steel 1.4404 (E)

Ventil konstruktionslængde:

DN10: I henhold til DIN EN 558 række 27

DN15-50: I henhold til DIN EN 558 række 1

DN65-80: I henhold til DIN EN 558 række 7

Valve face to face length:

DN 10: Acc. to DIN EN 558 row 27

DN 15-50: Acc. to DIN EN 558 row 1

DN 65-80: Acc. to DIN EN 558 row 7

Ventiloverflade:

Rustfri stål: Elektropoleret mat

Medieberørte dele = Ra 0,5

På bestilling mekanisk poleret Ra 0,3

Valve finish:

Stainless steel: Electropolished matt

Wetted parts = Ra 0.5

Satin polished (brushed) Ra 0.3 on request.

Aluminium: Pulverlakeret 60-80µm RAL 9006

Aluminium: Powder coated 60-80µm RAL 9006

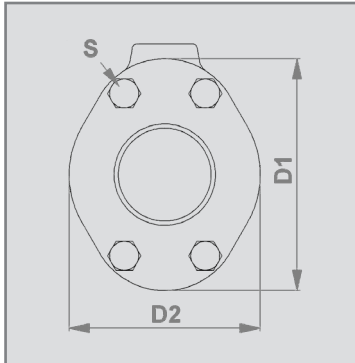
| DN (mm) | ø Di (mm) | D1 (mm) | D2 (mm) | ø D3 (mm) | L1 (mm) | L2 (mm) | L2a (mm) | L2b (mm) | G (inch) | H (mm) | ¹ S | ² Vol. (l) ² vol. (l) (ca./approx.) | Vægt weight (kg) (EE) | Vægt weight (kg) (AE) | Vægt weight (kg) (PE) |
|------------|--------------|------------|------------|--------------|------------|------------|-------------|-------------|-------------|-----------|----------------|---|-----------------------------|-----------------------------|-----------------------------|
| 10 | 10 | 46 | 35 | 34 | 80 | 115 | 162 | 190 | 1/8" | 23 | 4x(M6x16) | 0,03 | 0,5 | - | 0,3 |
| 15 | 16 | 56 | 47 | 34 | 95 | 130 | 187 | 215 | 1/8" | 28 | 4x(M6x20) | 0,05 | 0,9 | - | 0,5 |
| 20 | 20 | 62 | 49 | 34 | 103 | 150 | 199 | 227 | 1/8" | 31 | 4x(M6x25) | 0,07 | 1,0 | 0,6 | - |
| 25 | 26 | 72 | 57 | 50,50 | 120 | 160 | 212 | 241 | 1/8" | 36 | 4x(M6x30) | 0,09 | 1,5 | 1,0 | - |
| 32 | 32 | 80 | 66 | 50,50 | 140 | 180 | 229 | 267 | 1/4" | 45 | 8x(M6x35) | 0,13 | 1,9 | 1,3 | - |
| 40 | 38 | 90 | 77 | 50,50 | 160 | 200 | 241 | 279 | 1/4" | 50 | 8x(M6x35) | 0,22 | 2,6 | 1,7 | - |
| 50 | 50 | 110 | 88 | 64 | 185 | 230 | 268 | 304 | 1/4" | 60 | 8x(M6x35) | 0,36 | 3,9 | 2,5 | - |
| 65 | 65 | 139 | 115 | 91 | 173 | 216 | 272 | 332 | 1/4" | 73,5 | 8x(M10x35) | 0,44 | 4,0 | 3,3 | - |
| 80 | 80 | 172 | 133 | 106 | 213 | 254 | 314 | 374 | 1/4" | 90 | 8x(M10x35) | 0,88 | 5,8 | 4,7 | - |

¹ Monteringskrue (rustfri stål 1.4401 / AISI 316) i henhold til DIN 933 (EN24107) / mounting screws (stainless steel 1.4401 / AISI 316) according to DIN 933 (EN24107)

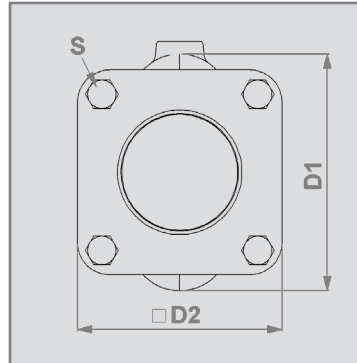
² Volumen = styremediets volumen ved lukket manchette / Volume = Control volume with closed sleeve

Pneumatisk slangeventil- Tilsvejsningsender

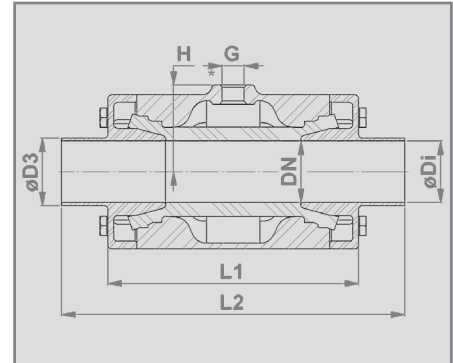
Air operated Pinch Valve - Weld-on ends



DN10 - DN50



DN65 - DN80



* DIN EN ISO 228 "G"


Tilslutningstype:

Tilsvejsningsender i henhold til DIN 11850 række 2


Connection type:

Weld-on ends according to DIN 11850 row 2

Hus:

- DN 10-80: Rustfri stål 1.4408 (E)
- DN 20-80: Aluminium AISi10Mg (A)
- DN 10-15: Plastic POM (P) naturfarvet
- DN 10-15: Plastic POM (P) ledende 

Body:

- DN 10-80: Stainless steel 1.4408 (E)
- DN 20-80: Aluminium AISi10Mg (A)
- DN 10-15: Plastic POM (P) natural white
- DN 10-15: Plastic POM (P) conductive 

Tilsvejsningsender :

- DN 10-80: Rustfri stål 1.4404 (E)

Weld-on ends:

- DN 10-80: Stainless steel 1.4404 (E)

Ventil konstruktionslængde:

DN10: I henhold til DIN EN 558 række 27
 DN15-50: I henhold til DIN EN 12982 række 61
 DN65-80: I henhold til DIN EN 558 række 7

Valve face to face length:

DN 10: Acc. to DIN EN 558 row 27
 DN 15-50: Acc. to DIN EN 12982 row 61
 DN 65-80: Acc. to DIN EN 558 row 7

Ventiloverflade:

Rustfri stål: Elektropoleret mat
 Medieberørte dele = Ra 0,5
 På bestilling mekanisk poleret Ra 0,3

Valve finish:

Stainless steel: Electropolished matt
 Wetted parts = Ra 0.5
 Satin polished (brushed) Ra 0.3 on request.

Aluminium: Pulverlakeret 60-80µm RAL 9006

Aluminium: Powder coated 60-80µm RAL 9006

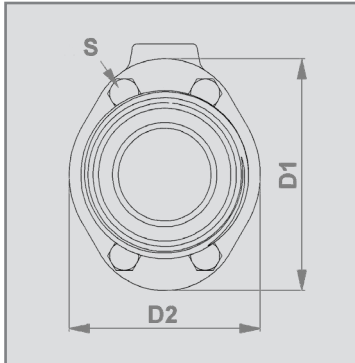
| DN (mm) | ø Di (mm) | D1 (mm) | D2 (mm) | ø D3 (mm) | L1 (mm) | L2 (mm) | G (inch) | H (mm) | ¹ S | ² Vol. (l) (ca./approx.) | Vægt weight (kg) (EE) | Vægt weight (kg) (AE) | Vægt weight (kg) (PE) |
|---------|-----------|---------|---------|-----------|---------|---------|----------|--------|----------------|-------------------------------------|-----------------------|-----------------------|-----------------------|
| 10 | 10 | 46 | 35 | 13x1,5 | 68 | 115 | 1/8" | 23 | 4x(M6x16) | 0,03 | 0,5 | - | 0,3 |
| 15 | 16 | 56 | 47 | 19x1,5 | 85 | 140 | 1/8" | 28 | 4x(M6x20) | 0,05 | 0,8 | - | 0,5 |
| 20 | 20 | 62 | 49 | 23x1,5 | 93 | 152 | 1/8" | 31 | 4x(M6x25) | 0,07 | 1,0 | 0,6 | - |
| 25 | 26 | 72 | 57 | 29x1,5 | 110 | 165 | 1/8" | 36 | 4x(M6x30) | 0,09 | 1,4 | 0,9 | - |
| 32 | 32 | 80 | 66 | 35x1,5 | 130 | 178 | 1/4" | 45 | 8x(M6x35) | 0,13 | 1,9 | 1,3 | - |
| 40 | 38 | 90 | 77 | 41x1,5 | 150 | 190 | 1/4" | 50 | 8x(M6x35) | 0,22 | 2,5 | 1,6 | - |
| 50 | 50 | 110 | 88 | 53x1,5 | 175 | 216 | 1/4" | 60 | 8x(M6x35) | 0,36 | 3,8 | 2,5 | - |
| 65 | 65 | 139 | 115 | 70x2 | 173 | 216 | 1/4" | 73,5 | 8x(M10x35) | 0,44 | 3,8 | 3,1 | - |
| 80 | 80 | 172 | 133 | 85x2 | 213 | 256 | 1/4" | 90 | 8x(M10x35) | 0,88 | 5,6 | 4,5 | - |

¹ Monteringskrue (rustfri stål 1.4401 / AISI 316) i henhold til DIN 933 (EN24107) / mounting screws (stainless steel 1.4401 / AISI 316) according to DIN 933 (EN24107)

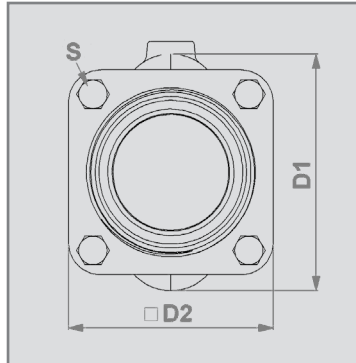
² Volumen = styremediets volumen ved lukket manchet / Volume = Control volume with closed sleeve

Pneumatisk slangeventil- Geving studs

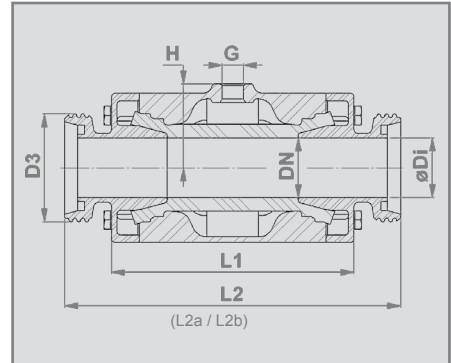
Air operated Pinch Valve - Threaded spigot



DN10 - DN50



DN65 - DN80



* DIN EN ISO 228 "G"

Tilslutningstype:

Geving studs i henhold til DIN 11851


DIN 11853-1 (L2a) / 11864-1 form A (L2b) på forespørgsel

Connection type:


Threaded spigot according to DIN 11851

DIN 11853-1 (L2a) / 11864-1 form A (L2b) on request

Hus:

- DN 10-80: Rustfri stål 1.4408 (E)
- DN 20-80: Aluminium AISi10Mg (A)
- DN 10-15: Plastic POM (P) naturfarvet
- DN 10-15: Plastic POM (P) ledende 

Body:

- DN 10-80: Stainless steel 1.4408 (E)
- DN 20-80: Aluminium AISi10Mg (A)
- DN 10-15: Plastic POM (P) natural white
- DN 10-15: Plastic POM (P) conductive 

Geving studs:

- DN 10-80: Rustfri stål 1.4404 (E)

Threaded spigot:

- DN 10-80: Stainless steel 1.4404 (E)

Ventil konstruktionslængde:

DN10: I henhold til DIN EN 558 række 27

DN15-50: I henhold til DIN EN 558 række 1

Valve face to face length:

DN 10: Acc. to DIN EN 558 row 27

DN 15-50: Acc. to DIN EN 558 row 1

Ventiloverflade:

Rustfri stål: Elektropoleret mat

Medieberørte dele = Ra 0,5

På bestilling mekanisk poleret Ra 0,3

Valve finish:

Stainless steel: Electropolished matt

Wetted parts = Ra 0.5

Satin polished (brushed) Ra 0.3 on request.

Aluminium: Pulverlakeret 60-80µm RAL 9006

Aluminium: Powder coated 60-80µm RAL 9006

| DN (mm) | ø Di (mm) | D1 (mm) | D2 (mm) | D3 | G (inch) | H (mm) | L1 (mm) | L2 (mm) | L2a (mm) | L2b (mm) | S | ² Vol. (l) ² vol. (l) (ca./approx.) | Vægt weight (kg) (EE) | Vægt weight (kg) (AE) | Vægt weight (kg) (PE) |
|------------|--------------|------------|------------|------------|-------------|-----------|------------|------------|-------------|-------------|------------|---|-----------------------------|-----------------------------|-----------------------------|
| 10 | 10 | 46 | 35 | Rd28x1/8" | 1/8" | 23 | 68 | 115 | 153 | 197 | 4x(M6x16) | 0,03 | 0,5 | - | 0,3 |
| 15 | 16 | 56 | 47 | Rd34x1/8" | 1/8" | 28 | 85 | 130 | 178 | 222 | 4x(M6x20) | 0,05 | 0,9 | - | 0,5 |
| 20 | 20 | 62 | 49 | Rd44x1/6" | 1/8" | 31 | 93 | 150 | 194 | 238 | 4x(M6x25) | 0,07 | 1,1 | 0,8 | - |
| 25 | 26 | 72 | 57 | Rd52x1/6" | 1/8" | 36 | 110 | 160 | 217 | 251 | 4x(M6x30) | 0,09 | 1,6 | 1,1 | - |
| 32 | 32 | 80 | 66 | Rd58x1/6" | 1/4" | 45 | 130 | 180 | 238 | 274 | 8x(M6x35) | 0,13 | 2,1 | 1,5 | - |
| 40 | 38 | 90 | 77 | Rd65x1/6" | 1/4" | 50 | 150 | 200 | 252 | 286 | 8x(M6x35) | 0,22 | 2,8 | 1,9 | - |
| 50 | 50 | 110 | 88 | Rd78x1/6" | 1/4" | 60 | 175 | 230 | 278 | 312 | 8x(M6x35) | 0,36 | 4,2 | 2,9 | - |
| 65 | 65 | 139 | 115 | Rd95x1/6" | 1/4" | 73,5 | 173 | 266 | 336 | 336 | 8x(M10x35) | 0,44 | 4,5 | 3,8 | - |
| 80 | 80 | 172 | 133 | Rd110x1/6" | 1/4" | 90 | 213 | 304 | 382 | 382 | 8x(M10x35) | 0,88 | 6,7 | 5,6 | - |

¹ Monteringskrue (rustfri stål 1.4401 / AISI 316) i henhold til DIN 933 (EN24107) / mounting screws (stainless steel 1.4401 / AISI 316) according to DIN 933 (EN24107)

² Volumen = styremediets volumen ved lukket manchet / Volume = Control volume with closed sleeve