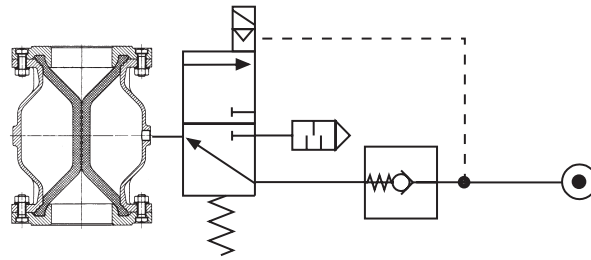


# Sikkerhedskobling type SS

## Safety Arrangement type SS



### Beskrivelse:

En lukket pneumatisk slangeventil forbliver lukket ved trykluft-/strømdudfald ved brug af sikkerhedskobling i lukket tilstand.

Ved trykluftudfald kan den pneumatiske slangeventil ikke åbnes af magnetventil (elektrisk/mekanisk).

Ved strømdudfald kan slangeventilen åbnes manuelt på magnetventil.

De anvendte magnetventiler er specielt kontrolleret for tæthed og sikrer længst mulige lukketryks-stabilitet.

Lukketryks-stabilitet, der påvirker tiden en pneumatisk slangeventil forbliver lukket uden tryklufforsyning, er igen afhængig af luftvolumen og tæthed i slangeventil.

### Description:

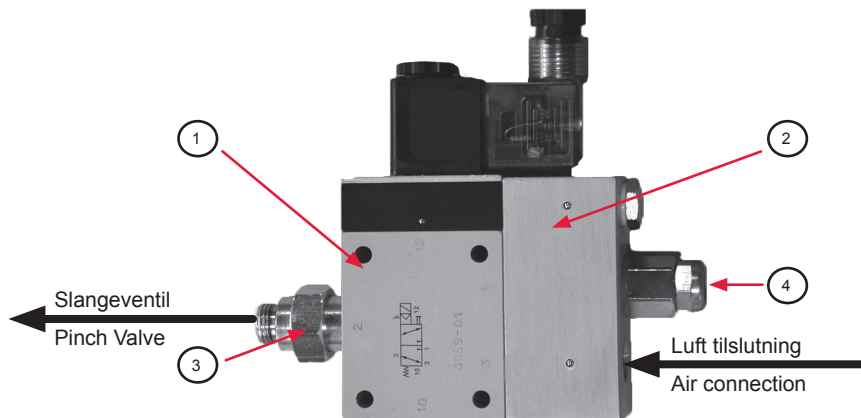
By using a protection circuit a closed pneumatic pinch valve will stay closed if the compressed air/power supply fails.

If the compressed air fails, the pneumatic pinch valve cannot be opened by the solenoid valve (electrically/mechanically).

If there is a power cut, the pinch valve can be opened and closed by means of a manual override.

The used solenoid valves are checked especially for tightness, thus guaranteeing the longest blow-down pressure stability possible.

The blow-down pressure stability, which is affected by time in terms of how long a pneumatic pinch valve will stay closed without a compressed air supply, is still dependent on the volume of air and a pneumatic pinch valve's tightness.



### Består af:

- 1 x Magnetventil med stik og sikkerhedskontakt (Pos.1)
- 1 x Styreblok (Pos.2)
- 1 x Tilslutningsgevind G 1/4" med O-Ring (Pos.3)
- 1 x Lyddæmper (Pos.4)
- Fittings

### Consisting of:

- 1 x Solenoid Valve with light connector and protective circuit (pos.1)
- 1 x Control block (pos.2)
- 1 x Fitting G 1/4" with O-ring (pos.3)
- 1 x Silencer (pos. 4)
- Small parts